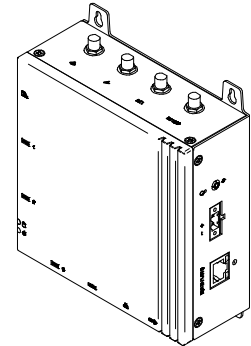
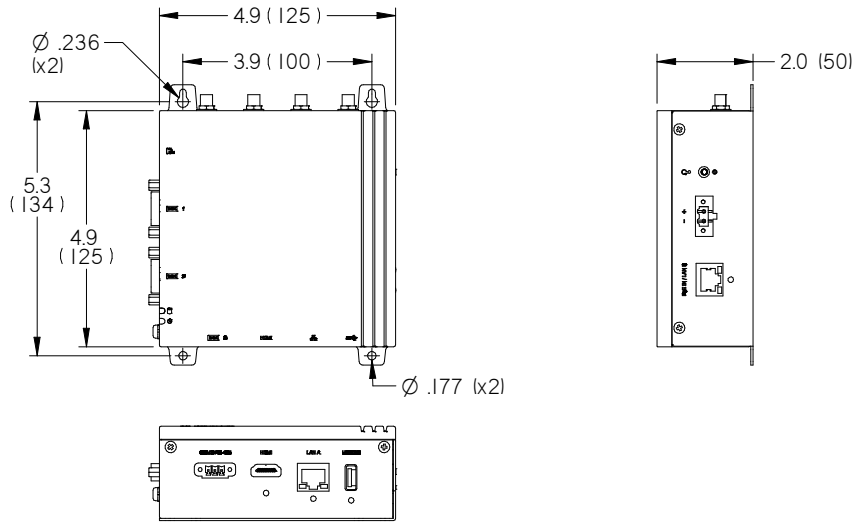


Product Submittal

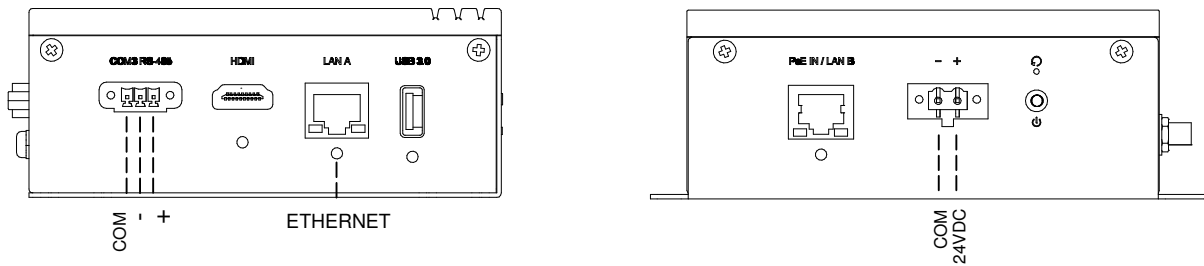
CURVE SPECIFICATIONS:	
ENVIRONMENTAL (OPERATING)	-4°F to 140°F (-20°C to 60°C), 5% to 85% R.H., (NON-CONDENSING)
ENVIRONMENTAL (STORAGE)	-40°F to 176°F (-40°C to 80°C), 5% to 85% R.H., (NON-CONDENSING)
INPUT POWER	24 VDC +/- 25%, 20VA MAX, CLASS 2
HOUSING	ALUMINUM
COMMUNICATION PROTOCOL	BACNET MS/TP, BACNET IP
COMMUNICATION SPEED	9600, 19200, 38400



**DIMENSIONS:**



**TERMINATION:**



24VDC	INPUT POWER, HOT
COM	INPUT POWER, GROUND
ETHERNET	IP CONNECTION CONNECT TO BUILDING NETWORK
+	BACNET +
-	BACNET -
COM	BACNET COM

NOTE: PLEASE REFER TO MANUAL FOR INSTALLATION AND SETUP INSTRUCTIONS.  
SEE PROJECT SUBMITTAL SCHEDULE FOR SELECTED OPTIONS.

ALL METRIC DIMENSIONS ( ) ARE SOFT CONVERTED. IMPERIAL DIMENSIONS ARE CONVERTED TO METRIC AND ROUNDED TO THE NEAREST MILLIMETER.  
SPECIFICATIONS ARE SUBJECT TO CHANGE WITHOUT NOTICE.