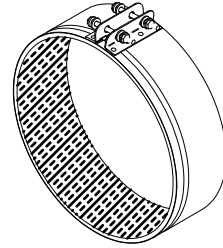


DRAWBAND CLAMP (DBC)

DBC SPECIFICATIONS:	
BAND	3.5in. WIDTH
FOAM	0.25in., UL 94, ELASTOMERIC
HARDWARE	BOLT AND LOCK NUTS
VALVE COMPANION SIZES	108, 110, 112, 114
VALVE COMPANION TYPE	SLIP

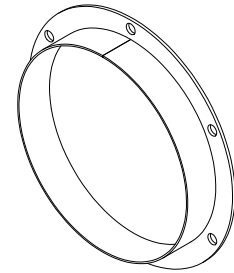


**DRAWBAND CLAMP CONSTRUCTION OPTIONS:**

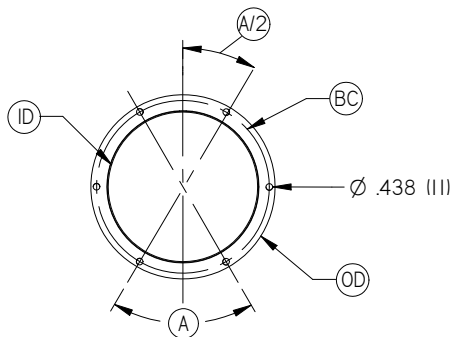
- GALVANIZED STEEL (GALV), 25ga
- 304 STAINLESS STEEL (SS), 24ga

COMPANION FLANGE (CFL)

CFL SPECIFICATIONS:	
MATERIAL	SEE MATERIAL OPTIONS BELOW
HARDWARE	NOT INCLUDED
VALVE COMPANION SIZES	108, 110, 112, 114
VALVE COMPANION TYPE	SLIP



**DIMENSIONS:**



UNIT SIZE	NUMBER OF BOLT HOLES	BC	OD	A	ID (MAX DUCT OD)
		in. (mm)	in. (mm)	Degrees	in. (mm)
8	6	Ø 9.25" (235)	Ø 10" (254)	60	Ø 8.25" (210)
10	6	Ø 11.25" (286)	Ø 12" (305)	60	Ø 10.25" (260)
12	6	Ø 13.25" (337)	Ø 15" (381)	60	Ø 12.25" (311)
14	8	Ø 15.75" (400)	Ø 17" (432)	45	Ø 14.25" (362)

**COMPANION FLANGE CONSTRUCTION OPTIONS:**

- ALUMINUM (AL)
- 316 STAINLESS STEEL (SS)

NOTE: PLEASE REFER TO VV MANUAL FOR INSTALLATION INSTRUCTIONS.  
SEE PROJECT SUBMITTAL SCHEDULE FOR SELECTED OPTIONS.

ALL METRIC DIMENSIONS ( ) ARE SOFT CONVERTED. IMPERIAL DIMENSIONS ARE CONVERTED TO METRIC AND ROUNDED TO THE NEAREST MILLIMETER.  
SPECIFICATIONS ARE SUBJECT TO CHANGE WITHOUT NOTICE.